

Think electric.



TECHNOLOGY OF THE FUTURE, TODAY.



MINI Z Line



ROCKEAT Line



CBL Line



ELISE Line



DREAMS COME TRUE

„This is my childhood dream come true! Electric and truly useful, powerful machines that actually move and work by themselves. They are agile, capable, and safe, they help people and at the same time they are sustainable, environmentally friendly and minimizing impact on operator's health.“

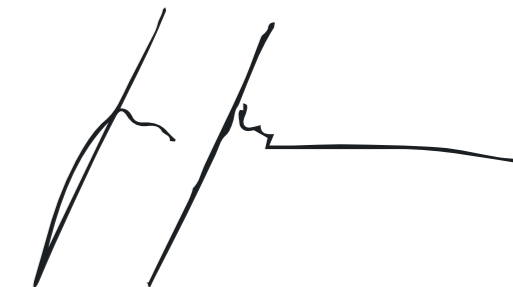
No virtual world, no Lego toys, no little models I used to play with as a kid. But real, remotely controlled machines. Our green, 100% electric skid steer loaders. And the best part is that they are made in our factory in the Czech Republic, just outside of Kladno and close to Prague international airport.

Made by our in-house team of engineers and IT specialists, people enthusiastic about working in our company, who are incredibly skilled, dedicated and hard-working. We allow them to transform their own dreams and ideas in product design, marketing and technical support. Some of them have been with us for decades, and some of them have joined us when we moved the factory from Slovakia. We managed to transform and grow in a record time and the team chemistry is something that is hard to describe. With uncertainty and anxiety, but with respect we stay humble and focused. It's not always easy, but we enjoy it. We want to work with honesty, and fight for our place in the world, facing fierce competition from around the world and breaking the traditional diesel dogma. But we believe that through exciting development and close relationships with our partners we will succeed.

We have combined the best of our Czech and Slovak teams, and in just a little over two years we have grown from one product to our complete range of Elise, CBL, Rockeat and MiniZ lines.

This is the realization of my childhood dream and proof that dreams and not only children's dreams really do come true!

MARTIN HAVRDA
CHAIRMAN OF THE BOARD
FIRSTGREEN Industries



INTRODUCTION OF ARBOL CAPITAL

The production of the Elise 900 and MiniZ 400 is now carried out under a separate business entity and both machines are entering the global market. The project has started in Slovakia and surrounding countries and is rapidly expanding to other countries not only in Europe but also overseas. The new sales team has big ambitions and is preparing to build an international partner network.

2021

MOVING TO CZECH REPUBLIC

Arbol Capital, together with key managers and engineers, controls 100% of the company's shares. Along with the change of ownership, production is now being moved to a brand-new manufacturing facility in Velká Dobrá. In September 2021 the first machine is produced in the new factory and in October we officially introduce the factory to our partners and customers. We can now produce up to 700 machines per year. We end the year in 37 countries with more than 60 partners.

2022

NEW GENERATION OF ELISE 900

The best example how much we value the opinion and shared experience with our customers is the new generation of our flagship product, the Elise 900. This 3rd generation machine has almost 40 improvements providing amazingly higher quality and better operational experience.

OPENING OF NEW BRANCH IN US

To provide our overseas customers and partner network with timely delivery and the best customer service, we decided to open our first international subsidiary in Asheville, North Carolina. With significant stock of both Elise and MiniZ, combined with flexible and sufficient spare parts and logistics, we are able to serve the market with the highest possible quality.

2023

NEW TRAINING CENTRE IN THE CZECH REPUBLIC

Continuous improvement of our partner network requires regular technical, sales and marketing training. In order to provide the best support possible, we opened a new training centre in Prague for our European partners who are always welcome in our factory. Transparency towards our partners is one of the cornerstones of our company values.

ELISE 700 INTRODUCTION

Introducing the Elise 700, a streamlined and lightweight version of the Elise 900 skid steer loader. This innovative machine features a high-efficiency lithium battery and a compact, narrow profile. Effortlessly portable, the Elise 700 can be easily transported on trailers with a 3.5-tonne limit, making it perfect for versatile use across various job sites.

NEW GENERATION OF MINI Z400

Our R&D team has currently finished the implementation of improvements to our MiniZ 400 compact loader and its production started in March 2023.

2024

CBL Line INTRODUCTION

First fully remotely operated fully electric skid steer loader introduced to market with loading capacity between 700 and 1500 kg improving operator's safety in dangerous or contaminated environments. Using the same product philosophy, just without the cabin and with possibility of single lifting point for easier logistics. Available from January 2024

ROCKEAT Line INTRODUCTION

Based on requests from our customers for lower version of our CBL line, we have designed new remotely operated, fully electric skid steer loader with height under 1,6 m ideal for low spaces with no need for high hinge pin height. Loading capacity corresponds with our CBL line, with different boom and hydraulics design. Available from June 2024

TELEOPERATION CAPABILITIES

This is the future of our machine. Teleoperation allows end users to operate machine anywhere in the world from their office using the same in-cabin mode via 5G network infrastructure. One operator can control more machines across various time zones. Extremely safe environment for operators compliant with ESG philosophy allowing creation of new job opportunity for operators with disabilities and minimizing health related risk on the jobsite. Available from Q3/2024.

2025

2026

THE FUTURE IS ELECTRIC

Our plans are once again a bit more ambitious. We are expanding the team, focusing on new markets and the R&D team is working with suppliers to develop a new generation of Elise 900, MiniZ 400 and electric attachments. And for our dealers, there is now a service and sales support department. And so far, we are still the only ones on the market...

1000

Machines produced target in total by mid 2025

100+

Dealer locations

9

Products portfolio

75+

Staff

1500 m³

Of production capacity



Main operations in Velká Dobrá (Czech Republic) and Asheville (US, North Carolina) assure stability of our chain of logistics - in EU, Americas and rest of the world.



We think globally.

Our machines are also available through our key distribution partners



60+
dealer locations

650+ machines
manufactured and distributed
around the world

in **48** countries



375



275

3
days

Manufacturing time for machine assembly

350
units

Production plan 2024

750
units

Total manufacturing capacity (per year)

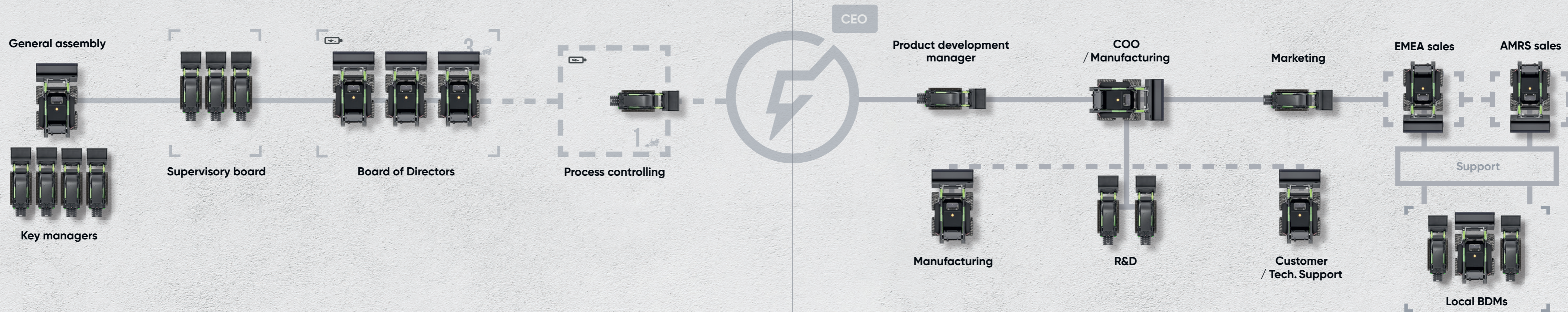
24+

Number of staff in assembly & logistics

FIRSTGREEN KEEPS GROWING

We are growing further, expanding our existing dealer network as well as our in-house sales team, service and sales support. Our R&D team is working on the next generation of MiniZ 400, efficient electrical attachments and other improvements that will take FIRSTGREEN to the next level. We are expanding into new continents, opening up markets in Asia and the Middle East.

Strategic pipeline to be organised



Martin Havrda

CEO, CHAIRMAN OF THE BOARD

Sport has been with me all my life. Apart from tennis and skiing, it was mainly modern pentathlon, five discordant, even aristocratic disciplines combined into one. Perhaps this is the source of my desire to try new things, to develop companies from the scratch, but also my diligence and ability not to be afraid of failure.

I am an economics graduate, I spent the final part of my studies in the USA, where I also had the opportunity to run a business. Two key people have shaped my view of the world and how to behave in life and in business. My long-time modern pentathlon coach, with whom much of my youth was spent, and, most importantly, my father, with whom I started and ran several successful businesses together. First it was the pharmacy business where I gained experience alongside him. Subsequently, our team and I spent 12 years developing and running a TelCo business that became an exciting target for a multinational telecommunication operator.

„Providing financial stability, strategic management and directing everything to work perfectly together for our people is my ultimate business goal.“



Václav Audes

AMRS REGION

Before I graduated from Prague Law School, I spent half of my life abroad – in India, Germany, France and Spain.

Today, I am a partner at Havel Partners, a law firm that for many years has provided legal services to the Havrda family in all areas of their business and private activities. This cooperation has gradually grown into a business and personal friendship. The broader spectrum of family investments and the need for professional management resulted in the establishment of Arbol Capital. Here, I am involved in the investment strategy and I'm responsible for the investment pipeline, trading and legal compliance areas.

„The countries I have lived in have enriched me with one insight: no matter whether a country is poorer or richer than the Czech Republic, there are always people who are a fountain of wisdom, have great goals and are an inspiration for a truly fulfilling life.“

Lukáš Rameš

MEMBER OF THE BOARD, COO

I graduated from CTU and then spent some time teaching future generations in IT. However, quite soon I moved into the real world of IT. I joined Martin and Hanka's team in 2012 at Planet A. At the end of 2020, I took over as the Chief Operating Office of FIRSTGREEN Industries.

I enjoy seemingly ordinary things. Gardening, working on the house I built almost entirely with my own hands, trips with my daughters. Or maybe a „cold one“ with friends at a raft in Central Bohemia, where I have lived all my life.

This practical life attitude allows me to accomplish things that sometimes seem like „mission impossible“.

„I enjoy being with my colleagues directly in on the production floor, helping them solve specific tasks during assembly, putting my hands to work. And I also enjoy coming up with all sorts of improvements that could take the machines up another notch.“



Hana Holubová

MEMBER OF THE BOARD

I spent the first part of my professional life in the healthcare sector, but after my maternity leave, I took part in developing the family telecommunications company Planet A together with Martin. After its sale, I continued with Martin to the investment group Arbol Capital, where I am in charge of the operational running of the whole group and all its portfolio companies.

At FIRSTGREEN, as a member of the Board of Directors, I mainly take care of procedural matters, contractual relations and personnel policy.

„I believe that the people I work with across all of our companies share a desire to do original and unusual things. The machines manufactured at FIRSTGREEN are perfect for this purpose.“



Team that takes care of our partners



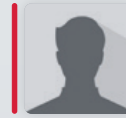
Jan Otta

+420 603 869 770
jan.otta@first.green



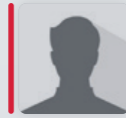
Gabriela Hůlová

+420 775 183 409
gabriela.hulova@first.green



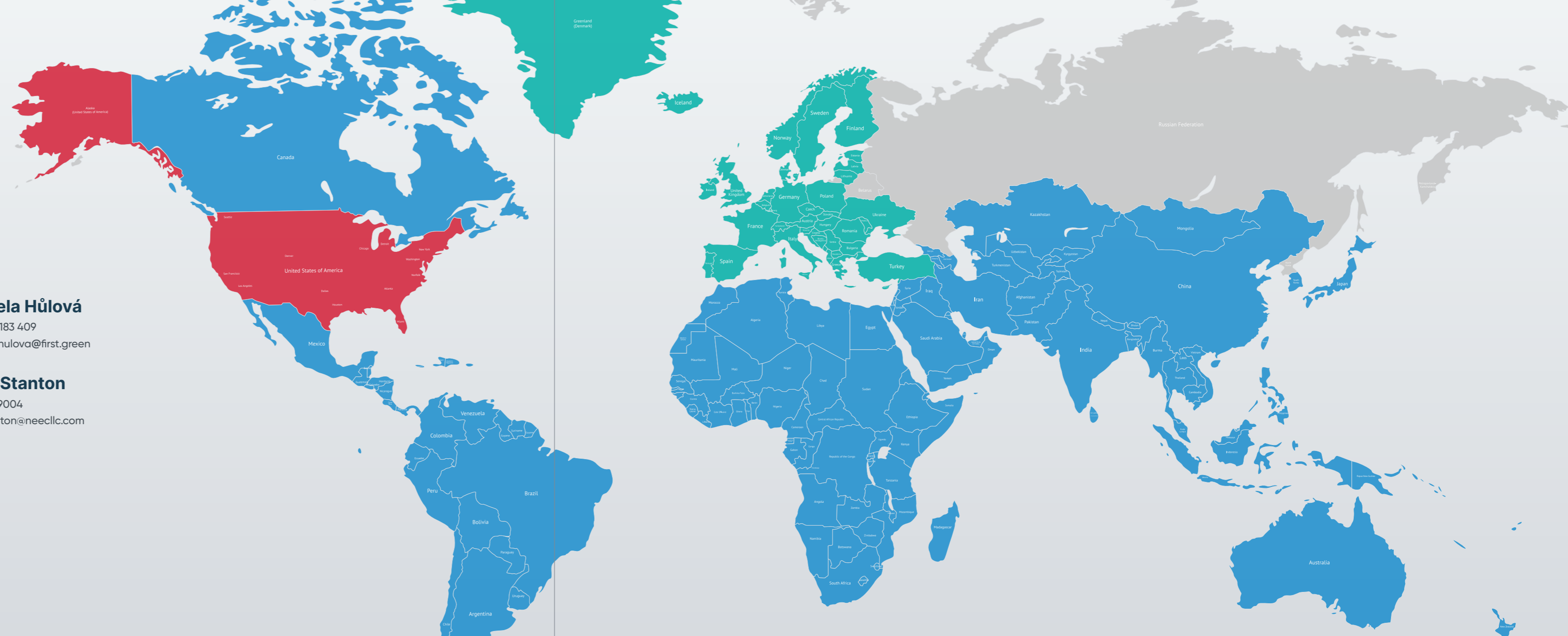
Marcus Suess

(828) 549-8765
marcus.suess@first.green



Royal Stanton

(518) 213-9004
royal.stanton@neecllc.com



Product portfolio

miniZ Line

ROCKEAT Line

CBL Line

ELISE Line

miniZ 400



ROCKEAT 100



ROCKEAT 1200



CBL 700



CBL 900



CBL 1200



ELISE 700



ELISE 900



ELISE 1200



Attachments



Product & Manufacturer Philosophy

i.e.

What are our core values and what are our machines capable of?

Sustainability & Responsibility

Efficiency & Effectivity

i.e.

How do our machines and business model benefit the end user?

Product & Manufacturer Philosophy



Ecology

- 100% electric
- Zero emission
- Minimal vibration
- Low Noise
- Minimum operational fluids
- High percentage recyclability



Construction / Battery

- Mounted modular construction
- Upgradable system across generations
- Minimum maintenance
- Lower requirement for spare parts
- Plug and play options for product modification by user
- Interchangeable options
- Variable battery and charging options
- Cabin / Cabin-less machine versions



Safety / Operation

- Minimum impact on operator health
- Improved safety at jobsite
- Remote operation for all machines
- No exposure to hazardous environment
- Decreased risk of work related diseases
- Teleoperation feature



Product placement

- Small size machine segment
- Maximum utilisation of electric energy
- Lower requirement for extensive operation
- Support role machines
- Low requirements for charging infrastructure

Efficiency & Effectivity



Operator features

- Selection of operator mode
- Minimum training requirements
- Operator experience related profiles
- Individual machine / account setup option
- Teleoperation



Efficiency features

- No energy consumption during Idle time
- Automatic switch between Normal/Power mode
- Power mode initiation button
- Automatic identification of e-Attachments
- Automatic performance setup for e-Attachments
- Macro setup for repetitive tasks
- Sensorics for work condition analysis



Performance analysis

- Statistical data for performance analysis
- GPS location
- Working hours
- Idle time analysis
- Load analysis
- Component analysis
- Energy consumption
- Travel and Hydraulic utilisation



Administrative Efficiency

- Low training costs for operators
- Per operator statistical and login data
- Operator experience based roles for higher efficiency
- Low demand for spare parts inventory due to machine simplicity
- Easier repair and maintenance due to modular construction
- Less heavy logistics
- Simplified maintenance staff requirement
- Remote diagnostics tools for quicker issue resolution

Driving Sustainability

by Reshaping industrial machinery

ESG report required?

By choosing FGI, you gain **positive ESG points** across the board: our machines are **98% recyclable**, offer unparalleled efficiency with low operating costs, and elevate workplace safety through advanced remote control technology. Align your company with the **future of sustainable industrial machinery** and demonstrate your leadership in environmental responsibility, social impact, and ethical governance.

Transparent Supply Chain Management

FGI ensures full transparency by using 98% recyclable materials and producing zero-emission machines, fostering trust in every step of our supply chain.

Ethical Partnerships and Sourcing

FGI collaborates with ethical suppliers who share our values, ensuring our electric skid steers meet high sustainability and integrity standards.

Strengthening Local Dealer Partnerships

FGI empowers local dealers with retrofittable, zero-emission skid steers, providing the tools and support to drive sustainable solutions.

Long-Term Strategy Planning

FGI's electric skid steers, with 98% recyclability and retrofittable designs, are built for long-term sustainability and reduced environmental impact.

Regular Sustainability Audits

FGI conducts regular audits to ensure our zero-emission electric skid steers meet strict environmental and sustainability benchmarks.

Innovation-Driven Ethical Practices

FGI's innovative zero-CO₂ skid steers combine cutting-edge technology with ethical manufacturing, setting a new industry standard for sustainability.



Environmental

The mission

- Lowering CO₂ footprint
- Reducing environmental impact
- Reasonable resource management
- Low noise and minimal vibration
- Reducing pollution not only in highly populated areas
- Promoting sustainability

Accomplished by

- Modular construction and plug-and-play options
- Battery-powered, zero-emission machines
- 98% recyclable materials
- Naturally cooled components
- Minimize number of components
- Normal and power mode for energy conservation
- User accounts to eliminate operator inefficiencies
- Individual machine set-up options
- Speed selection and parametrization functions
- Lead-acid and lithium battery options
- Adjustable mode of operation
- Minimum operational fluid



Social

The mission

- Enhancing workplace safety
- Minimizing risks of occupational diseases
- Supporting local communities
- Promoting health-conscious environments
- Creating equal work opportunities
- Reducing liability risks for companies
- Intuitive product solution
- Surpassing EU ecological standards
- Supporting creative environments for career growth

Accomplished by

- Distance operation
- Ergonomic machine design
- Hand-built, locally produced machinery
- Adjustable advanced safety features
- Adjustable operational modes for more effective training
- Comprehensive safety and operational training
- System of continuous training for end-customers
- Low noise and vibration levels
- Remote control
- Teleoperation
- Adjustable safety sensors
- Self-leveling
- Damping
- Various safety light options
- Adjustable sound signalizations
- Start/stop buttons
- Adjustable operational modes
- Advanced joysticks with full operation capabilities
- Drive by wire joysticks
- Button mapping



Governance

The mission

- Lower operational costs
- Improving financial efficiencies
- Cost-effective training
- Minimum inventory requirements
- Unified product design
- Extended product lifecycle
- Respecting existing resources
- Respecting existing supply chain
- Supply chain freedom

Accomplished by

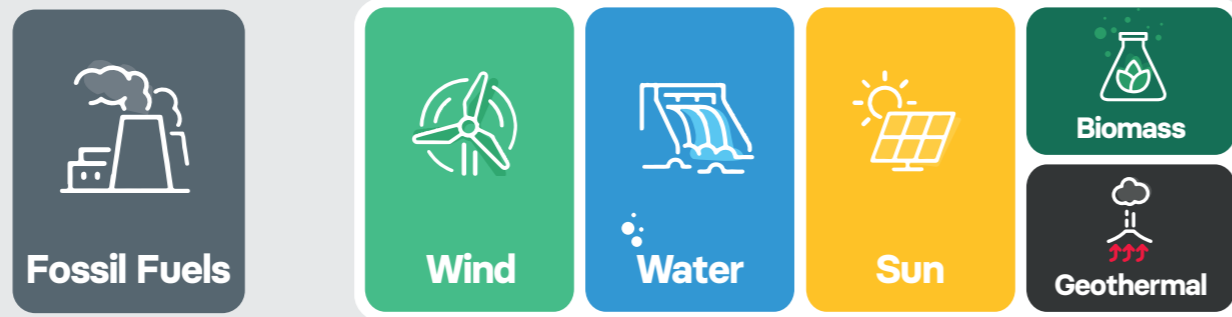
- Unified operational platform
- Identical product management
- Unified system of operation
- Unified portfolio spare parts list
- Retrofittable design
- Minimum service capacities and maintenance costs
- Simplified product design
- Retrofit kits
- Plug-and-play options
- Part interchangeability
- Modular chassis
- Attachment plate options
- Electric and hydraulic attachment standards

More information on sustainability at [first.green/esg](https://www.firstgreen.com/esg)

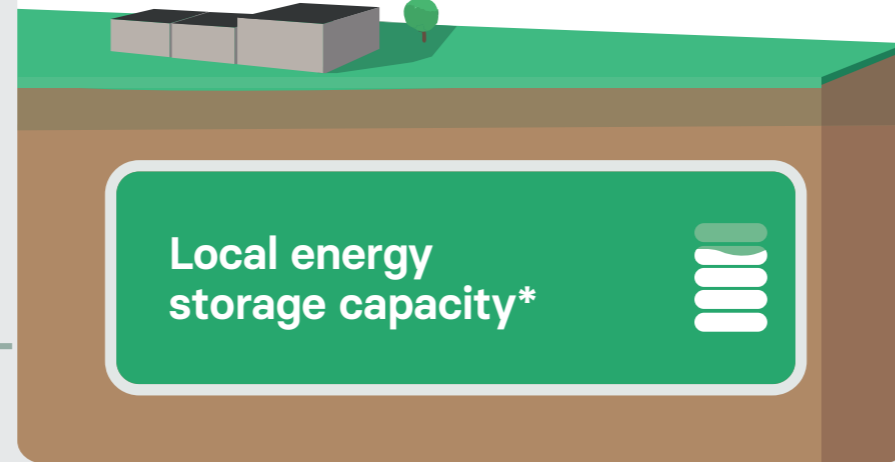


Completing the ecosystem

These are the sources of power for your business



This is your business / operation



Excess energy

Goes back to the grid (usually at a loss)

Why? Use FGI machine as an energy storage and conserve energy.



And you need business to get done

This is me, your machine



* I help you with energy storage capacity
Utilising excess energy

Also I am a mobile power bank

Also I am a tool charger

We contribute to sustainability by contributing a second life to your battery.

Batteries under optimal performance will be used in our sustainable projects.

Group energy division

Battery energy storage of renewable power plants

See our other projects on [first.green/ppp](https://www.first.green/ppp)

ESG in Figures



Emissions

0 emissions compared to **18.57** tCO₂ of a similar diesel skid-steer loader

697 trees must be planted to offset **1** diesel machine loader



Recyclability

98% Recyclable (lead-acid battery version)



Costs

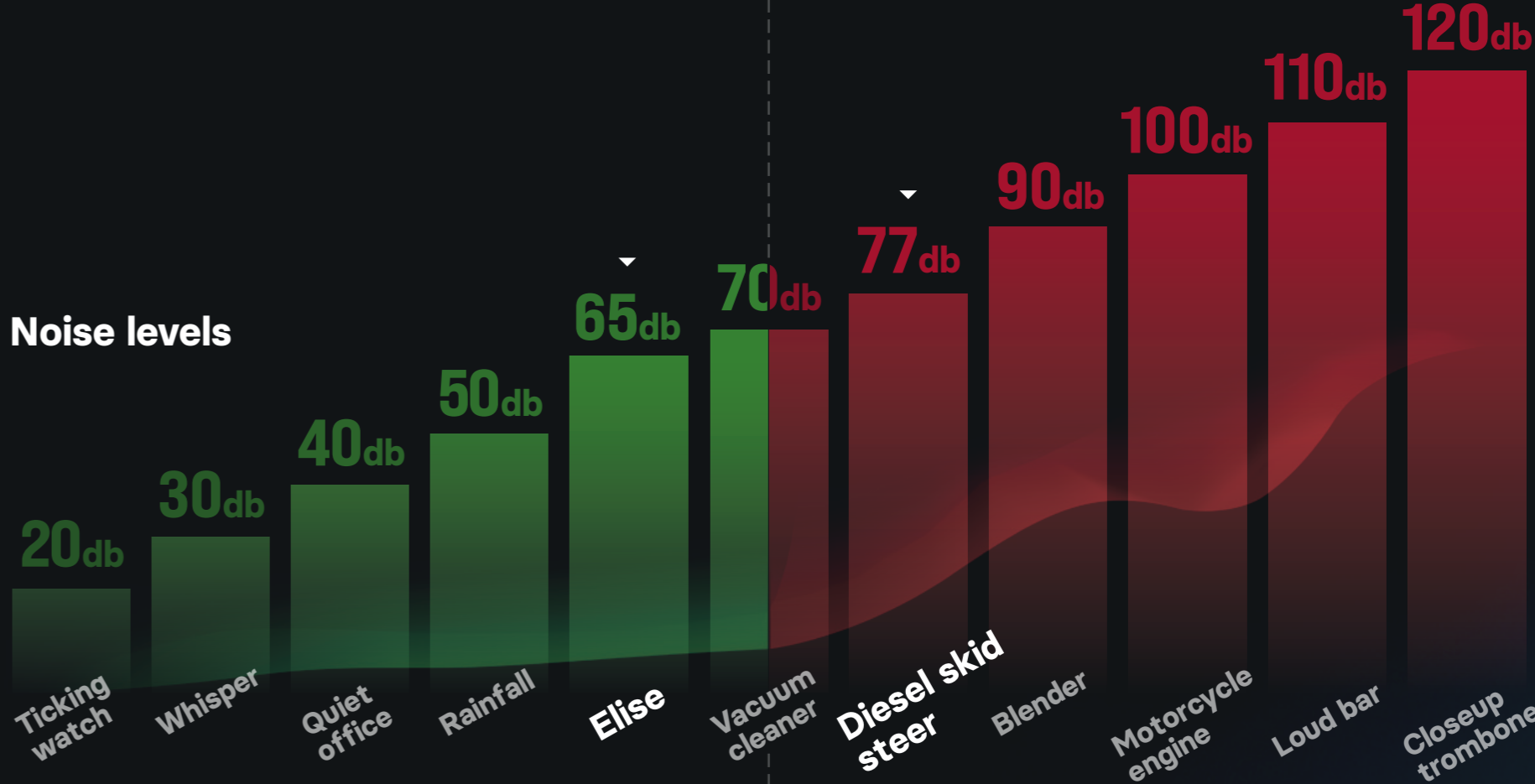
-80% Reduction of operational cost



Manufacture

1 chassis - **3** product lines
Same set of spare parts reducing material waste.

Noise levels



Sounds above 70 dB are considered harmful with longer, or periodic exposures

We all have to understand that we are bringing a new technology to our customers.

And they have to change their way of thinking.

Green solution for the right application.

Our machines are not a general green solution for every application. Although we are believers in our products, we remain rational. When talking to your potential a thorough analysis has to be performed to make sure that the customer receives the desired value added. Even if the result of analysis fails the sale.

Different philosophy and thinking.

It works different, it sounds different, it is precise and you can set it up according to your needs. It is a computer with a lot of power and endless possibilities. But you have to change your mind when operating the machine. Because no one will come with a reserve tank when you run out of fuel.

Proper maintenance is the key.

It only works if you treat it right. It is robust, easy to repair, with a very small number of components that can go wrong. But it is not a submarine, and the battery needs proper maintenance to deliver the right performance over time. And you have to transfer this to your customers.

When in doubt, this is why believe our machines are the right ones for you.

It's actually quite simple.

Fully electric, low noise, zero emmision.

Extreme power, clean operation and minimum noise for the operator and environment are the key elements of our product performance. We continuously improve our machines and batteries to provide longer operating hours and lower energy consumption.

Cost effective, nearly no maintenance.

Some people may not know these other qualities of battery-powered equipment. With the tiny percentage of moving parts (in comparison with standard diesel engines), there are much fewer repairs needed, reducing operating costs by more than 80%. Please refer to the according materials for detailed information.

Sustainable and upgradeable.

Our machines are 98% recycleable and are constructed so that every new generation features can be implemented to the older generation of the machines. Keep your machines always up to date through smart retrofit solutions and protect our environment.

Where most of our machines work

Our partners and their customers find our machines most valuable in the following industries



Mining industry



Construction & demolition



Recycling & waste disposal



Agriculture



Harbours



Material handling

Product features



Power mode

Power mode uses maximum power (torque) of the machine for drive and hydraulics. This mode needs to be used for hydraulic attachments which require higher hydraulic flow. Due to higher consumption, power mode should not be used as default. However, it can be set as the default for high-demand operations.



Normal mode

The default factory mode. Normal mode provides substantial power, while reducing energy consumption. It was designed to have enough power for operating the machine under normal working conditions and prolonging battery life. Torque and maximum speed is limited, this will result in lower damage of soft surfaces.



FIRSTGREEN App

FIRSTGREEN machines offer numerous advantages and operating solutions through the FGI app, thanks to their electric drive and digital customization. The FGI app replaces the function of a key and can be downloaded to any device using Android or iOS. The FGI app for remote control and diagnostics is available on Google Play and the App Store.



Remote control functionality

The remote control via the Danfoss remote control for Elise Line is now self-activating when the seat in the cab is not pressed down. Furthermore, the travel and hydraulic speeds can be changed on the remote control, and as with the MiniZ 400, the speeds can be reduced via the turtle/rabbit switch. Mobile app can be used for remote control of the machine as a backup solution when other systems are malfunctioning.



4 travel and hydraulic speeds

Extreme precision of the machines is achieved by 4 individual speeds that the operator can choose from for both hydraulic and travel functionalities. Can be further modified by operator.



Demolition Kit

Strong heavy duty demolition kit protects track system and body of the machine against unwanted damage caused by residual material during demolition. Higher durability combined with strong frame of the machine provides perfect solution for construction industry.



Attachment plate selection

Possibility to choose from 3 different attachment plates to provide end consumer with possibility to use their own fleet of attachments. FGI proprietary, Bobcat MT52/55 and ToroDingo plates available as an option that can be chosen before manufacturing or as a replacement option.



New Control Panel

Relocation of the controls to the rear, easily accessible part of the machine, providing a faster and more ergonomic operation, eliminating the need to open the cover for machine operation. Improved protection of the radio antenna and higher safety for operators through new Start/Stop safety button.



Hardmount display

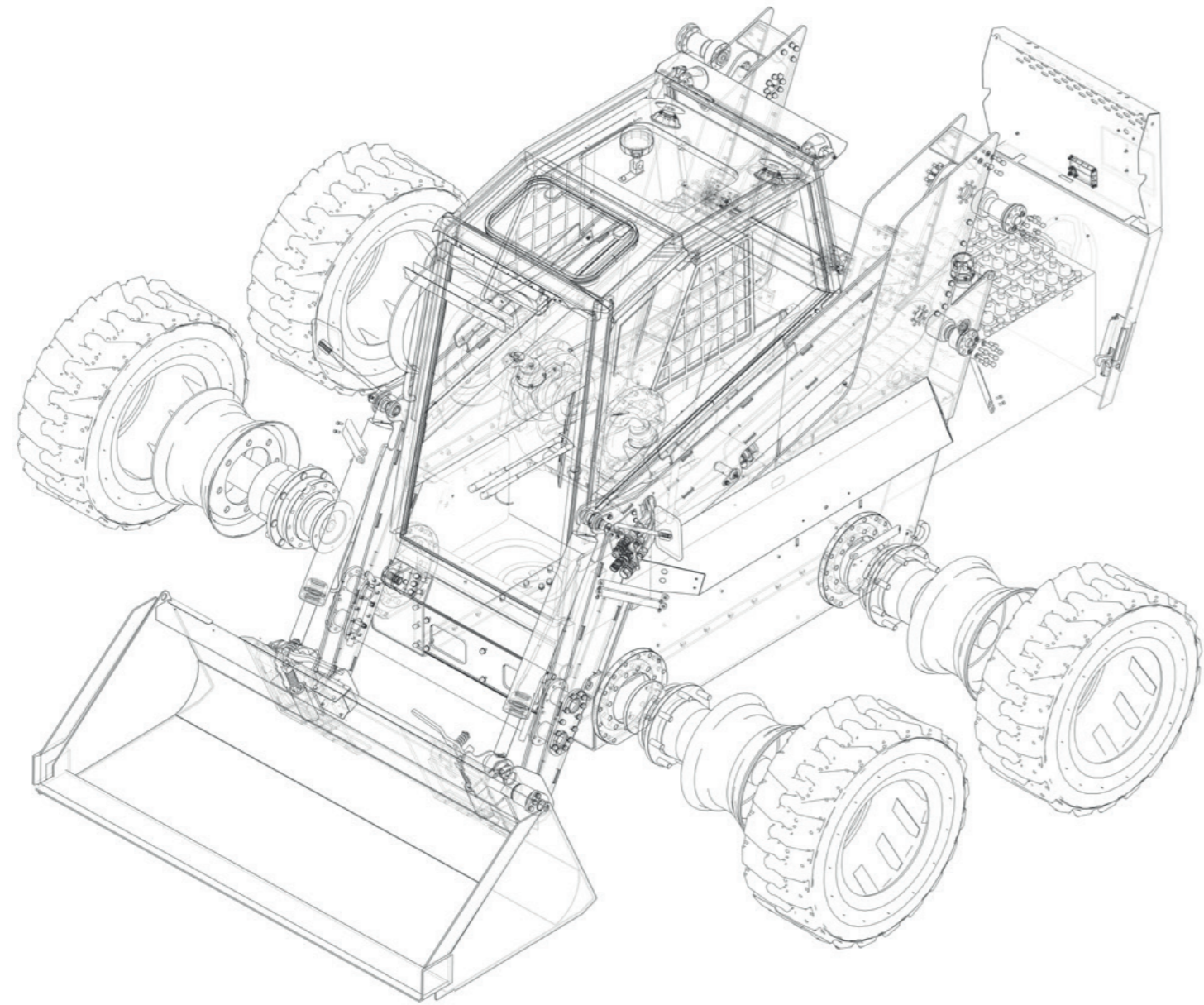
Hardmount display is new standard for Elise line. Many options can also be accessed through the display within the cabin, including customizable joystick settings (ISO pattern, H pattern, inverted H pattern), Power/Normal mode selection based on working conditions, built-in diagnostics, remote phone backup mode, sensor activation, and motor temperature readings. Operators can also manually adjust power levels for the 4 speed settings (5% to 100%), achieving micro speeds at lower ranges. Mobile apps for remote control are published on Google Play and App Store.



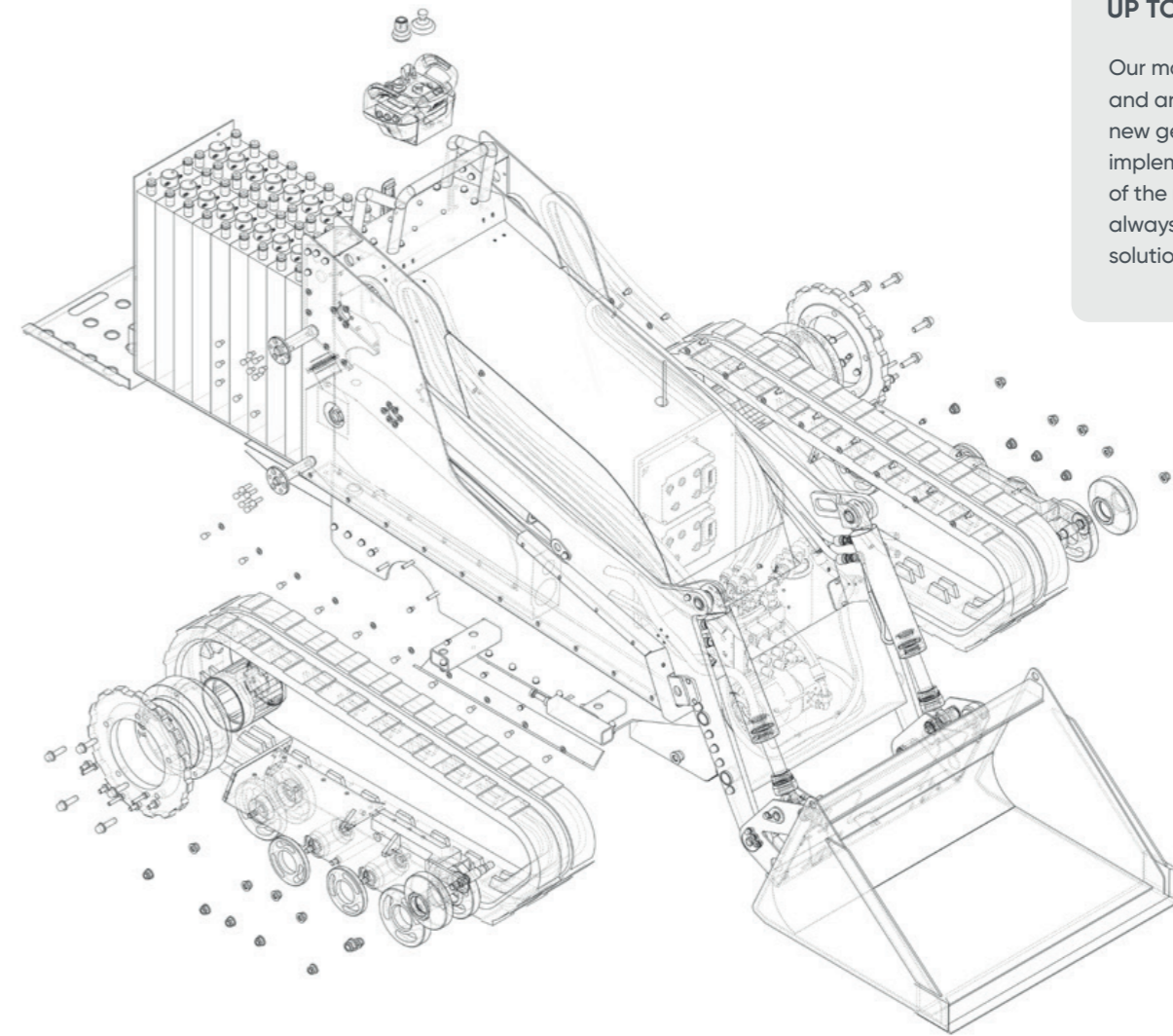
Bluetooth Module

Use joystick, radio remote control or your bluetooth mobile phone control. Allows alternative operation using the same mobile application as for the Elise, eliminating problems when radio controlled operation is malfunctioning or remote controller is damaged.





Modular construction.



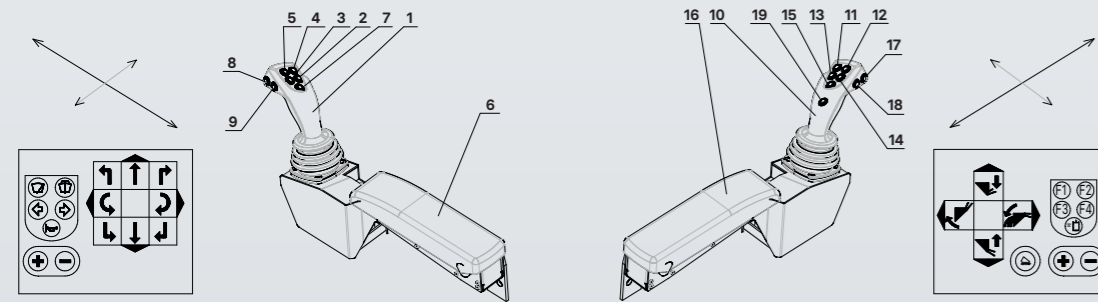
KEEP YOUR MACHINE UP TO DATE

Our machines are 98% recyclable and are constructed so that selected new generation features can be implemented to the previous generation of the machines. Keep your machines always up to date through smart retrofit solutions and protect our environment.

Simplicity of operation

Joysticks in-cabin mode

Operators can conveniently select from Iso-type, H- pattern and H-reverse. Extreme precision of the machines is achieved by 4 individual speeds that the operator can choose from for both hydraulic and travel functionalities.



- 1 Left control lever handle
- 2 Right turn indicator button
- 3 Left turn indicator button
- 4 Front windscreen washer button
- 5 Windscreen wiper button
- 6 Left armrest
- 7 Horn button
- 8 Button for increasing drive speed
- 9 Button for decreasing drive speed
- 10 Right control lever handle
- 11 Attachment button F1
- 12 Attachment button F2
- 13 Attachment button F3
- 14 Attachment button F4
- 15 Attachment over ride button
- 16 Right armrest
- 17 Button for increasing hydraulic speed
- 18 Button for decreasing hydraulic speed
- 19 Self leveling bucket / boost power button

ELISE 700

ELISE 900

ELISE 1200

mini Z400

Joystick controller

2.4 GHz / 433 MHz



Control panel

In-Cabin (Elise line only)

Teleoperation

5G or Wi-Fi



Mobile app

Backup solution for in-cabin or remote mode control

CBL 700

CBL 900

CBL 1200

ROCKEAT 700

ROCKEAT 1200

One control scheme

All of our machines use the same controls with identical control schemes. This can significantly reduce the time for operator onboarding and make the administration time of the fleet minimal.

Mobile app / Bluetooth backup solution

All of our machines use the same controls with identical control schemes. This can significantly reduce the time for operator onboarding and make the administration time of the fleet minimal.

Teleoperation capabilities

Allows you to remotely control any machine equipped with cameras and sensors via an internet data network like Wi-Fi or 5G. This can cut down operation costs and enable you to operate in hazardous environments without involving operators directly. Teleoperation allows remote control of your machine from anywhere in the world - precisely and safely.

miniZ Line

Mini loader, just 79 cm wide to pass through interior doors.

100%
electric

65-75 dB
noise level

NO
emission

Remote control only
Ideal for interior work in tight places
For demolition and agriculture
Powerful tracked drivetrain
Lithium battery option

Standard features

- Danfoss Remote controller type: iK2
- Danfoss GPS type: CS100
- Danfoss hydraulic system
- Reinforced underbelly skid plate
- Micro-speed control
- Independent motors – 2 for drive, 1 for hydraulic
- Operator platform



Battery endurance

up to **6** hours

Dependant on use, conditions
and configuration

Operational weight

from **900** kg

Weight depends
on final configuration

Compact dimensions

1150 height mm / **788** width mm

Fits through standard
doorways

Load capacity

400

Ultimate performance
in small package

ROCKEAT Line

Cabinless remotely operated loader.

100% electric
65-75 dB noise level
NO emission

Specs according to the rest of Elise lineup
 Great choice for high-risk tasks / environments
 Microspeed for precise control
 Self-leveling gyro platform
 Remote control

Standard features

- Danfoss Remote controller type: iK2
- Quick-Tach Coupler SAE J2513
- Danfoss GPS type: CS100
- Bluetooth module for Apple/Android smartphone App
- Front LED bar light on hood
- Rear LED work lights on frame
- Orange beacon light
- Travel alarm signalization
- Self leveling bucket system
- Built-in diagnostics
- Electromagnetic brake release switch
- Micro-speed control
- Independent motors – 2 for drive, 1 for hydraulic
- Fenders with standard lights (without lifting points)
- Cable set pre-install for electric attachments



REMOTE CONTROL ONLY

All of our Rockeat machines are equipped with a remote control suite - via the Danfoss remote, or even with our mobile app in case you need a quick backup solution.



PRECISION CONTROL

Remote control technology allows for more accurate and refined movements, significantly increasing precision, especially in tasks like excavation or material handling.



LOWER CLEARANCE HEIGHT

Low-profile, cabinless machinery is built to deliver unparalleled performance - designed for efficiency in confined or restricted spaces, providing superior maneuverability and durability.



Battery endurance

up to **6** hours

Dependant on use, conditions and configuration

Hinge pin height

3289 mm

Rockeat 700 is 43 mm lower than competing average

Number of charging cycles

1500 / 3000+

Lead Acid / Lithium option

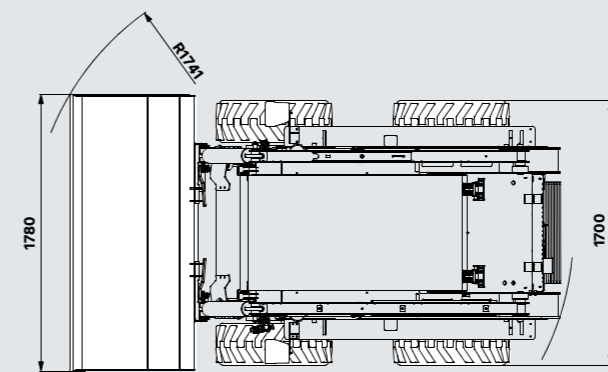
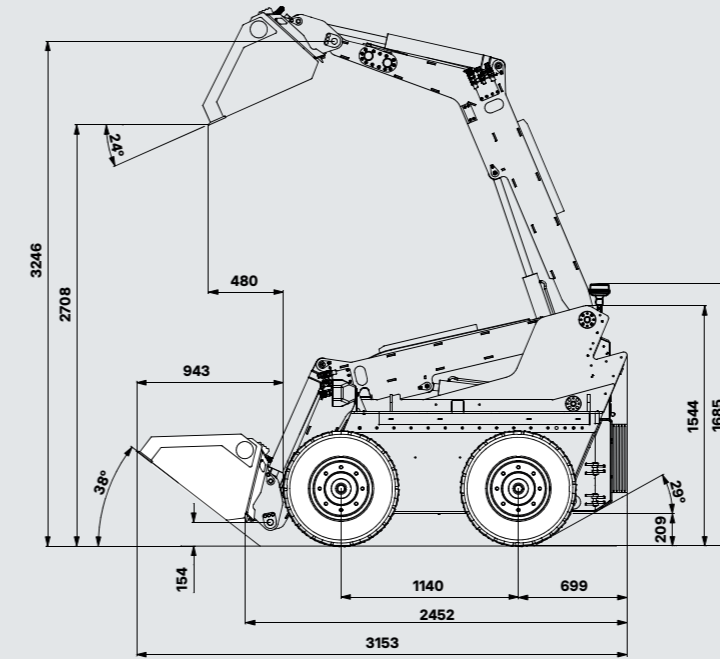
Loading capacity

700-1200 kg

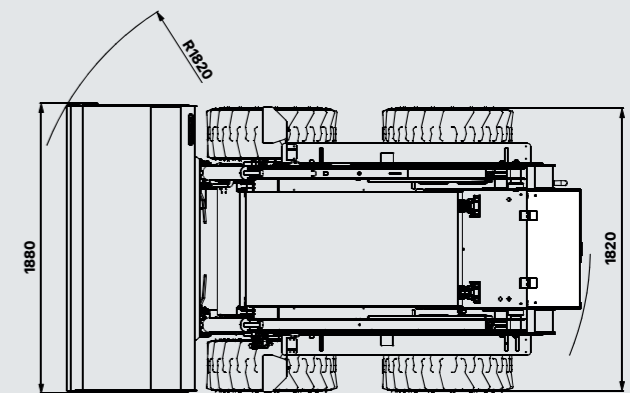
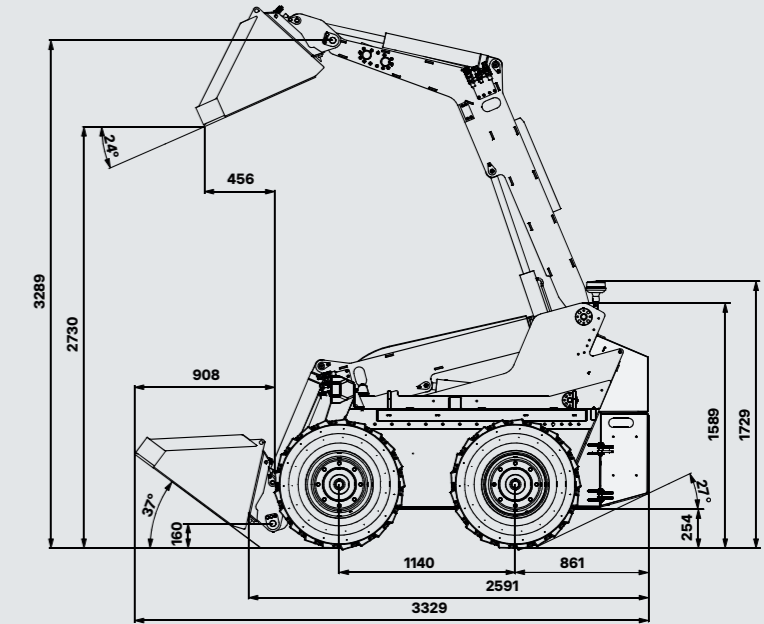
Suitable for a wide range of construction tasks

Product specification

SPECIFICATIONS	
Rated load capacity	700 - 1 200 kg
Tipping load	1 400 - 2 400 kg
Minimum travel speed	0,15 km/h
Maximum travel speed	12 km/h
Hinge pin height	3 246 - 3 289 mm
Rated operating weight	2 550 - 3 550 kg
Total weight of the loader	3 250 - 4 750 kg



ROCKEAT 100



ROCKEAT 1200

CBL Line

Cabinless remotely operated loader.

100% electric
65-75 dB noise level
NO emission

Retrofible modular construction
Minimal operational fluids
Availability of electric attachments
Improved visibility
Enhanced safety

Standard features

- Danfoss Remote controller type: iK2
- Quick-Tach Coupler SAE J2513
- Danfoss GPS type: CS100
- Bluetooth module for Apple/Android smartphone App
- Front LED bar light on hood
- Rear LED work lights on frame
- Orange beacon light
- Travel alarm signalization
- Self leveling bucket system
- Built-in diagnostics
- Electromagnetic brake release switch
- Micro-speed control
- Independent motors – 2 for drive, 1 for hydraulic
- Fenders with standard lights (without lifting points)
- Cable set pre-install for electric attachments



VERSATILITY

Remote-operated machines can access areas where it's not feasible for a human operator to be present, such as underground, in contaminated zones, or extreme weather conditions.



AGILITY

The absence of a cabin allows for a more compact design, enabling the machine to navigate tight spaces and work in confined areas with ease and precision.



ADAPTABILITY

Remote-operated machines can be adapted for various industries and diverse tasks, from construction and agriculture to mining and disaster response.



Battery endurance

up to **6** hours

Dependant on use, conditions and configuration

Hinge pin height

3665 mm

356 mm higher reach than the competing average

Number of charging cycles

1500 / 3000+

Lead Acid / Lithium option

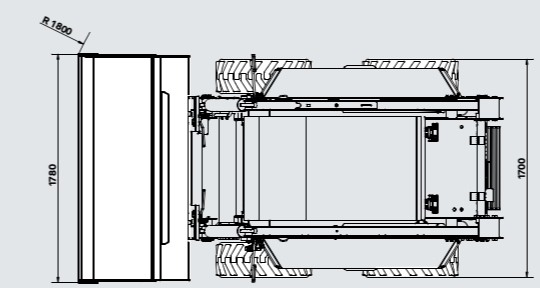
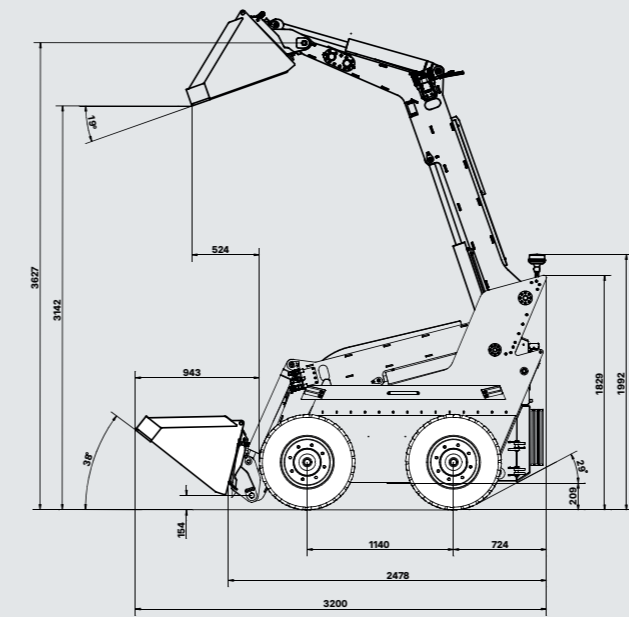
Loading capacity

700-1200 kg

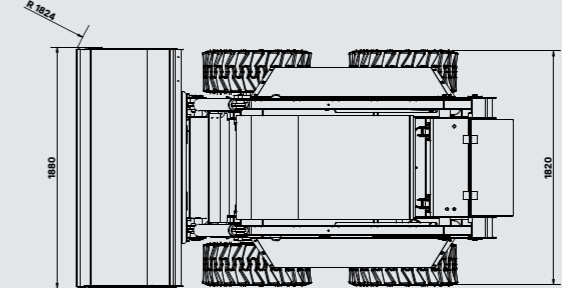
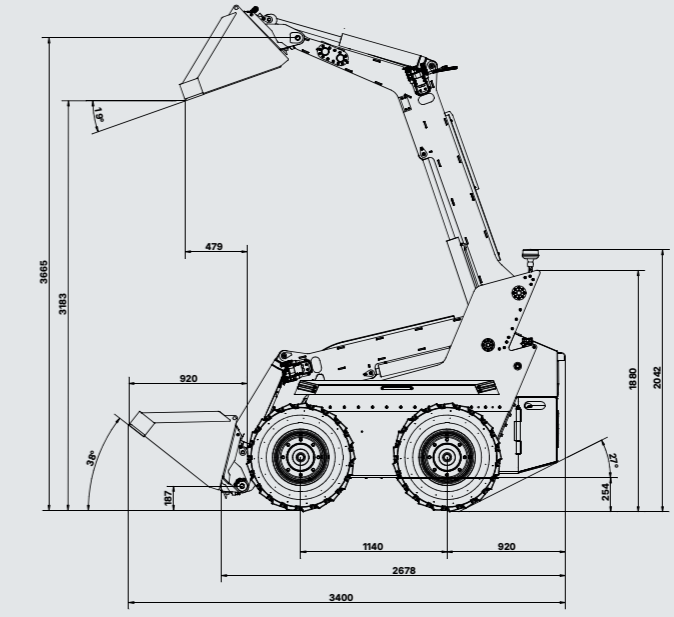
Suitable for a wide range of construction tasks

Product specification

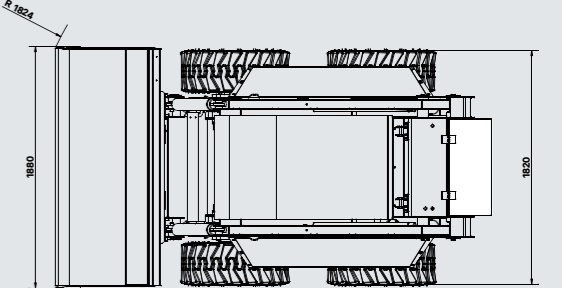
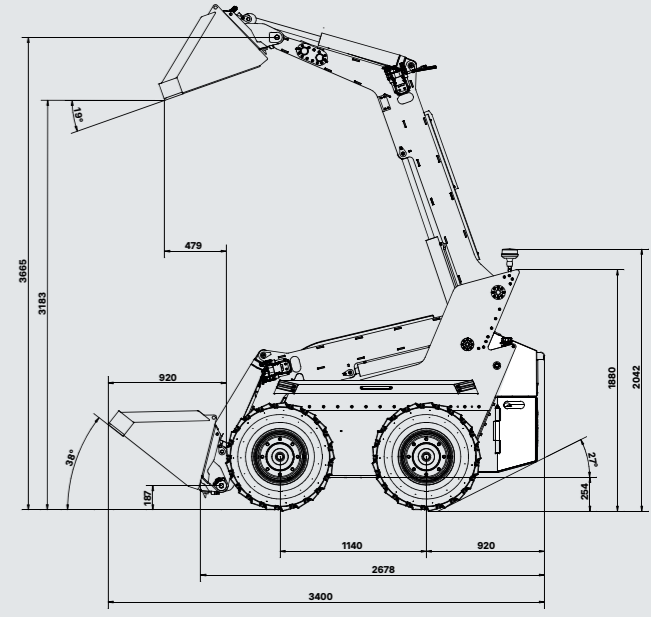
SPECIFICATIONS	
Rated load capacity	700 - 1 200 kg
Tipping load	1 400 - 2 400 kg
Minimum travel speed	0,15 km/h
Maximum travel speed	12 km/h
Hinge pin height	3 627 - 3 665 mm
Rated operating weight	2 550 - 3 550 kg
Total weight of the loader	3 250 - 4 750 kg



CBL 100



CBL 900



CBL 1200

ELISE Line

Large capacity battery powered loader.

100% electric
65-75 dB noise level
NO emission

- No vibrations
- Minimum operational fluids
- Low operational costs
- towable version
- Hot swap option
- Self-leveling gyro platforms

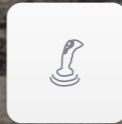
Standard features

- Quick-Tach Coupler SAE J2513
- Safety reinforced cabin ROPS / FOPS
- Danfoss GPS type: CS100
- Bluetooth module for Apple/Android smartphone App
- RAM phone holder
- Reversing camera with display
- Front LED bar light on cabin
- Rear LED work lights on cabin
- Orange beacon light
- Travel alarm signalization
- Water bottle holder
- Emergency exit window
- Front roller sunshade
- Sunroof opening with tinted glass
- Windscreen wiper with washer
- Seat, door and seatbelt sensors
- Self leveling bucket system
- Multiple control option – ISO, H pattern and inverted H pattern
- Built-in diagnostics
- Electromagnetic brake release switch
- Micro-speed control
- Independent motors – 2 for drive, 1 for hydraulic
- Fenders with standard lights (without lifting points)
- Cable set pre-install for electric attachments



SUPERIOR LIFTING CAPABILITY

Frame supports heavy lifting while retaining the conveniences of our other models, with advanced technologies for extended battery life and minimized environmental footprint.



JOYSTICKS IN-CABIN MODE

Operators can conveniently select from Iso-type, H- pattern and H-reverse. Extreme precision of the machines is achieved by 4 individual speeds that the operator can choose from for both lift and travel.



LITHIUM AND LEAD-ACID BATTERIES

Various options for battery setups available according to customers specific environmental conditions and maintenance requirements, as well as desired loading capacity.



Battery endurance

up to **6** hours

Dependant on use, conditions and configuration

Hinge pin height

3637 mm

356 mm higher reach than the competing average

Number of charging cycles

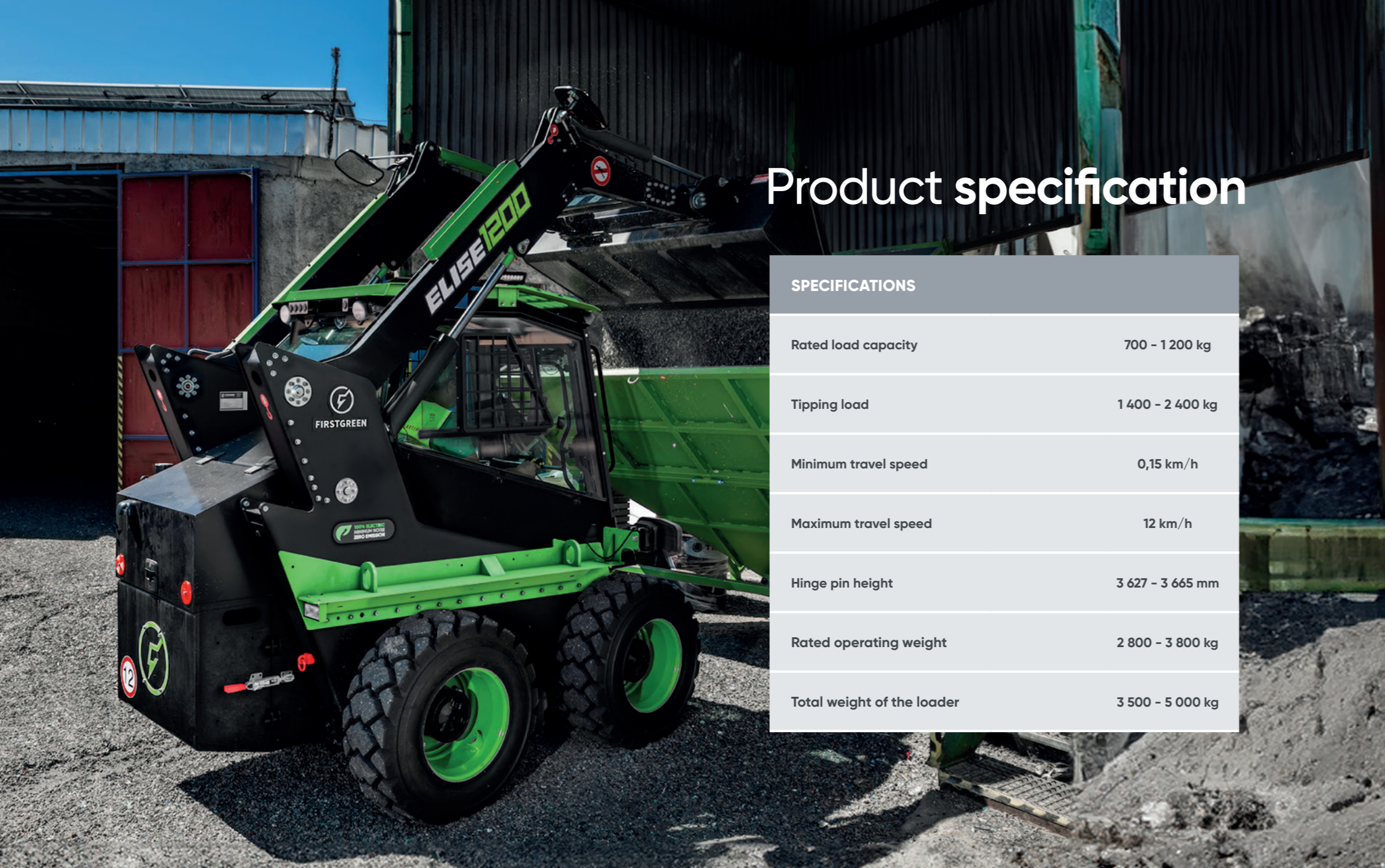
1500 / 3000+

Lead Acid / Lithium option

Loading capacity

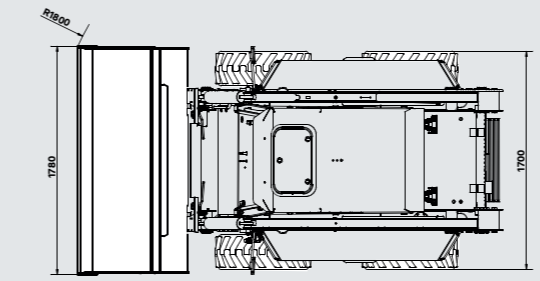
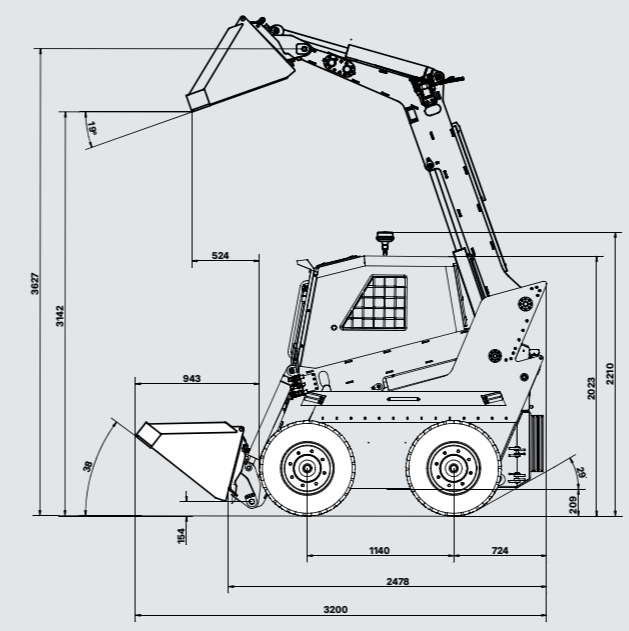
700-1200 kg

Higher loading capacity for tasks that demand heavy lifting

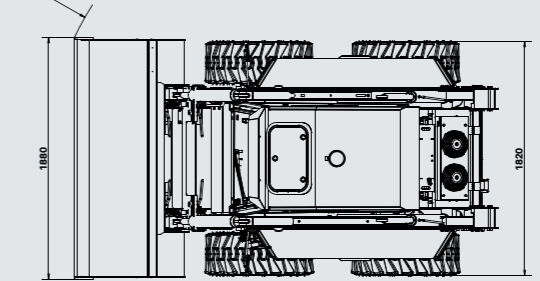
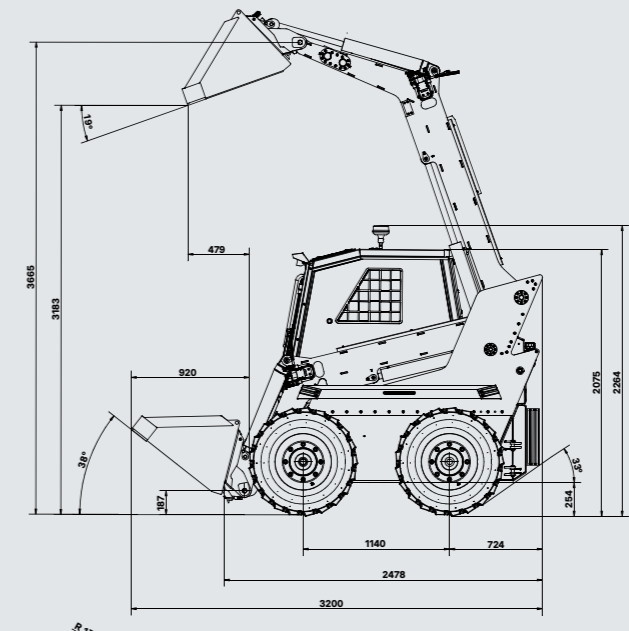


Product specification

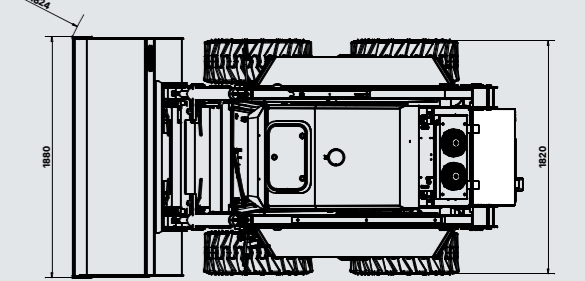
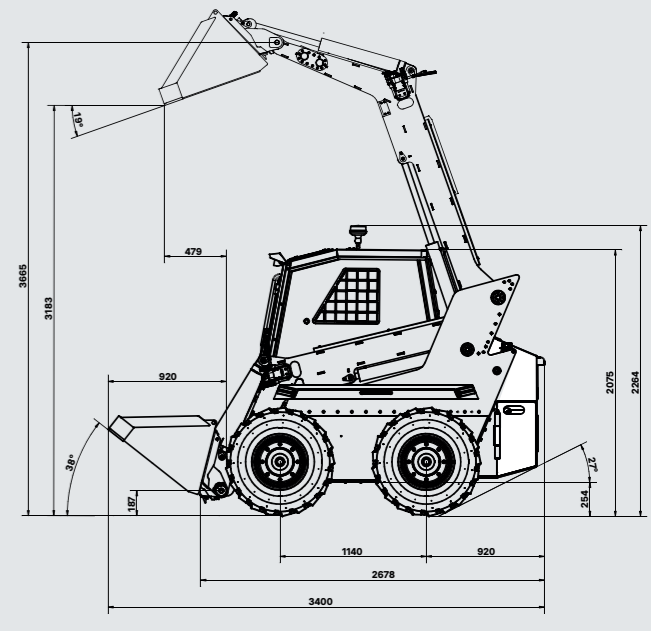
SPECIFICATIONS	
Rated load capacity	700 - 1 200 kg
Tipping load	1 400 - 2 400 kg
Minimum travel speed	0,15 km/h
Maximum travel speed	12 km/h
Hinge pin height	3 627 - 3 665 mm
Rated operating weight	2 800 - 3 800 kg
Total weight of the loader	3 500 - 5 000 kg



ELISE 100



ELISE 900



ELISE 1200

Battery options

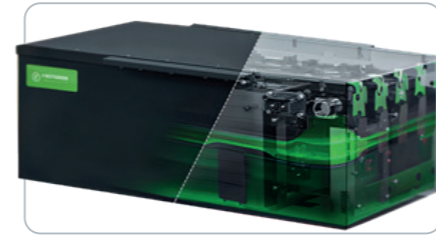
We are aware that batteries are a key part of our machine's performance and reliability. That's why we are constantly striving to increase their capacity, shorten charging times and increase the number of charging cycles. Our newest lithium-ion battery, as well as older lead-acid got BST and MSDS documents and UN38.3 certification as well - their transportation is no problem whatsoever.



LEAD-ACID BATTERY



SMART LEAD-ACID BATTERY



LITHIUM BATTERY

Charging options

We understand that high-quality chargers are crucial to the performance and reliability of our machines. To ensure we provide top-tier solutions, we continually explore advancements in this field. Currently, we are proud to partner with leading companies such as Zivan, Hoppecke, and Star, to bring the best charging technology to our products.



ZIVAN
SG3



HOPPECKE
Trak



STAR
STAR 96V

Battery specifications



Nominal Battery Capacity	210 Ah, 280 Ah, 420 Ah	225 Ah, 240 Ah, 400 Ah	225 Ah, 240 Ah, 400 Ah	136 Ah, 272 Ah
Nominal Battery Energy	10.1 kWh, 13.4 kWh, 40.3 kWh	10.8 kWh, 23 kWh, 38.4 kWh	10.8 kWh, 23 kWh, 38.4 kWh	7 kWh, 14 kWh
Battery Type	Lithium	Lead-Acid	Lead-Acid	Lithium
Partial Charging	✓	✗	✓	✓
Extra Maintenance Required	✗	✓	✓	✗
Recyclability	✗	✓	✓	✗
Fast Charge Option	✓	✗	✗	✓
Battery Voltage	48V, 96V	48V, 96V	48V, 96V	48V
Hotswap Option	✗	✓	✓	✗
Extra Weights Required	✓	✗	✗	✓
Protection	IP65	✗	✗	IP66
Chargers	Zivan SG3 for 48V, Zivan SG3 for 96V	Zivan SG3 for 96V	Hoppecke for 48V, Hoppecke for 96V	Zivan SG3 for 48V
Compatible Models	mini Z400 ELISE 100 ELISE 900 ELISE 1200 ROCKEAT 100 ROCKEAT 1200	mini Z400 ELISE 900 ELISE 1200 ROCKEAT 1200	mini Z400 ELISE 900 ELISE 1200 ROCKEAT 1200	mini Z400

Customisation options & addons

Additional setup

Tailor your equipment with features like remote diagnostics, various battery setups, and multiple travel speeds to precisely fit your operational needs. These customisation capabilities put you in complete control, ensuring your machinery works just as hard as you do.



Roof guard



Demokit



Exterior appliance sockets



Beacon Options



Optional rear lights



Set of universal tyres



Single lifting point



Track type selection



Air-con unit



External stop button



Light set for fenders



Openable back cover



Front light for CBL



Hardmount display



Remote control



Attachment plate selection

Hydraulic Attachments

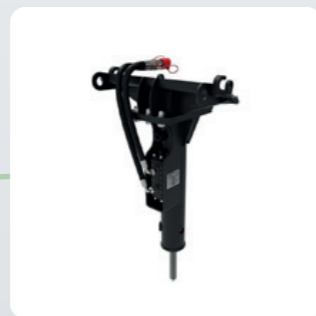
Use the well-known technology of hydraulic attachment with universal quick couplings for rapid connection to various machinery.



4-1 Bucket



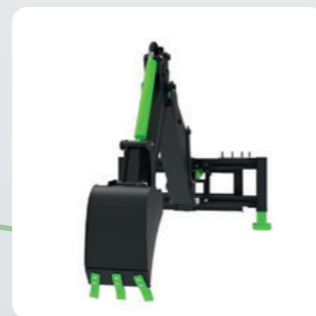
Grapple Bucket



Hydraulic Hammer



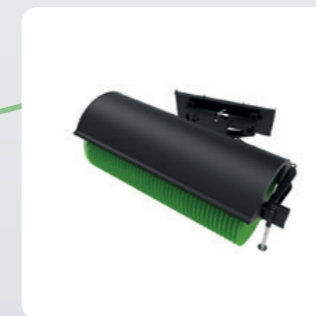
Dozer Blade



Backhoe

E-Attachments

Improve efficiency of operation with our fully electric attachments designed specifically for our products.



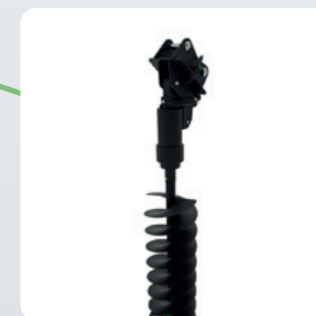
eSweeper



eSnow Blower



eConcrete Mixer



eAuger



eDozer blade



PTO attachment plate

Our PTO attachment plate allows for seamless connectivity of **off-market attachments**. We also offer the **Toro Dingo option**, so you can benefit from our state-of-art machinery while using attachments you already own.

Extend the possibilities of your machines.

Find all of our attachment options on firstgreen/att



Available systems

We provide and continuously develop diagnostic tools for our clients with the ability to remotely access a specific machine to provide key operational information. Clients can also access all operational and service documentation through their user account.

NO ENGINE FLUIDS

HIGH SERVICE LIFE OF HYDRAULIC FLUIDS

REMOTE DIAGNOSTICS

REMOTE REPAIRS

COLLECTION AND ANALYSIS OF ERROR MESSAGES

EASY REPLACEMENT OF ALL COMPONENTS

MONITORING AND SOLVING OF ANY PROBLEMS



Key company contacts

Technical department

General technical support

service@first.green

FGI Service portal

service.firstgreenindustries.com

Danfoss remote diagnostics

<https://plus1connect.danfoss.com>

Head of technical dpt.

Marek Vild
marek.vild@first.green
+420 776 861 009

CTO

Lukáš Rameš
lukas.rames@first.green
+420 777 821 522

Financial department

Invoices

invoices@first.green

CFO

Karel Ryška
karel.ryska@arbolcapital.cz
+420 602 553 454

Marketing

General marketing support

marketing@first.green

Head of Marketing

Jan Anděl
jan.andel@first.green
+420 777 017 963

Logistics department

Invoices

logistics@first.green

Head of logistics

Albert Čermák
albert.cermak@first.green
+420 602 553 454

Product development

Head of product development

Martin Havrda
martin.havrda@first.green
+420 731 431 999

Sales department

General contact

info@first.green

Head of EMEA region

Martin Havrda
martin.havrda@first.green
+420 731 431 999

Head of AMRS region

Václav Audes
vaclav.audes@first.green
+420 776 348 867

Europe

Gabriela Hůlová
gabriela.hulova@first.green
+420 775 183 409

Middle east, Asia, Africa, Oceania, South America, Canada

Jan Otta
jan.otta@first.green
+420 603 869 770

Your contact (s)



info@first.green

+420 737 633 733

F U T U R E I S

E L E C T R I C



@fgi.official



@firstgreen_industries



@firstgreen-industries



@firstgreenindustries

FIRSTGREEN Industries +420 737 63 37 33, info@first.green, Paprsková 1535/2, 140 00 Prague, Czech Republic, ID CZ08900213

Visit our website at **first.green**.